



Marchadors Park & Studios



A- Entrance
Retail stores & educational area



A1- Store
40'x40' octagon hut
2 8'x53' storage containers



B- Studios Building
90' x 180'



C- Stage + control room/studio
90' x 180'



D- Arena
220' x 400'



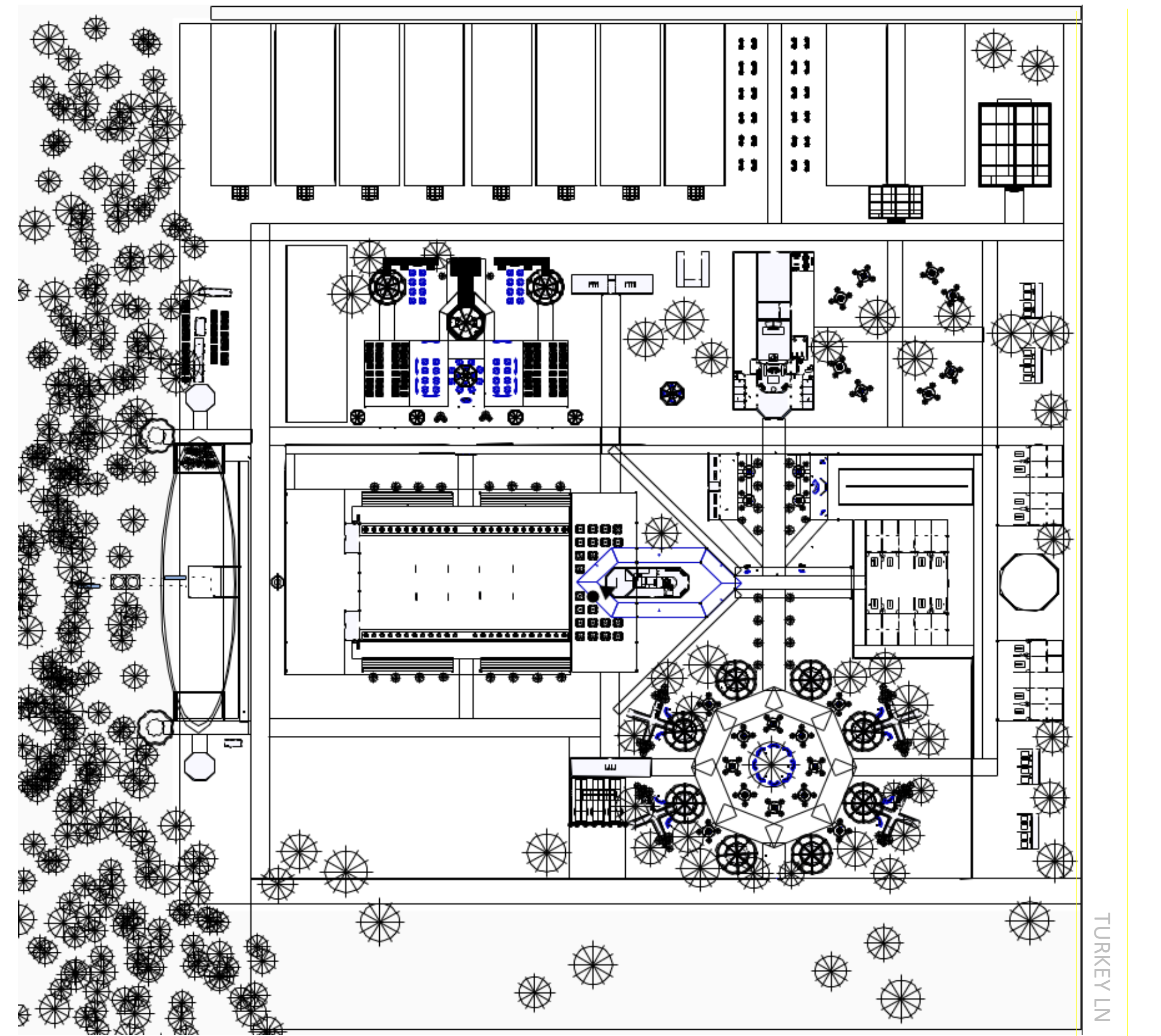
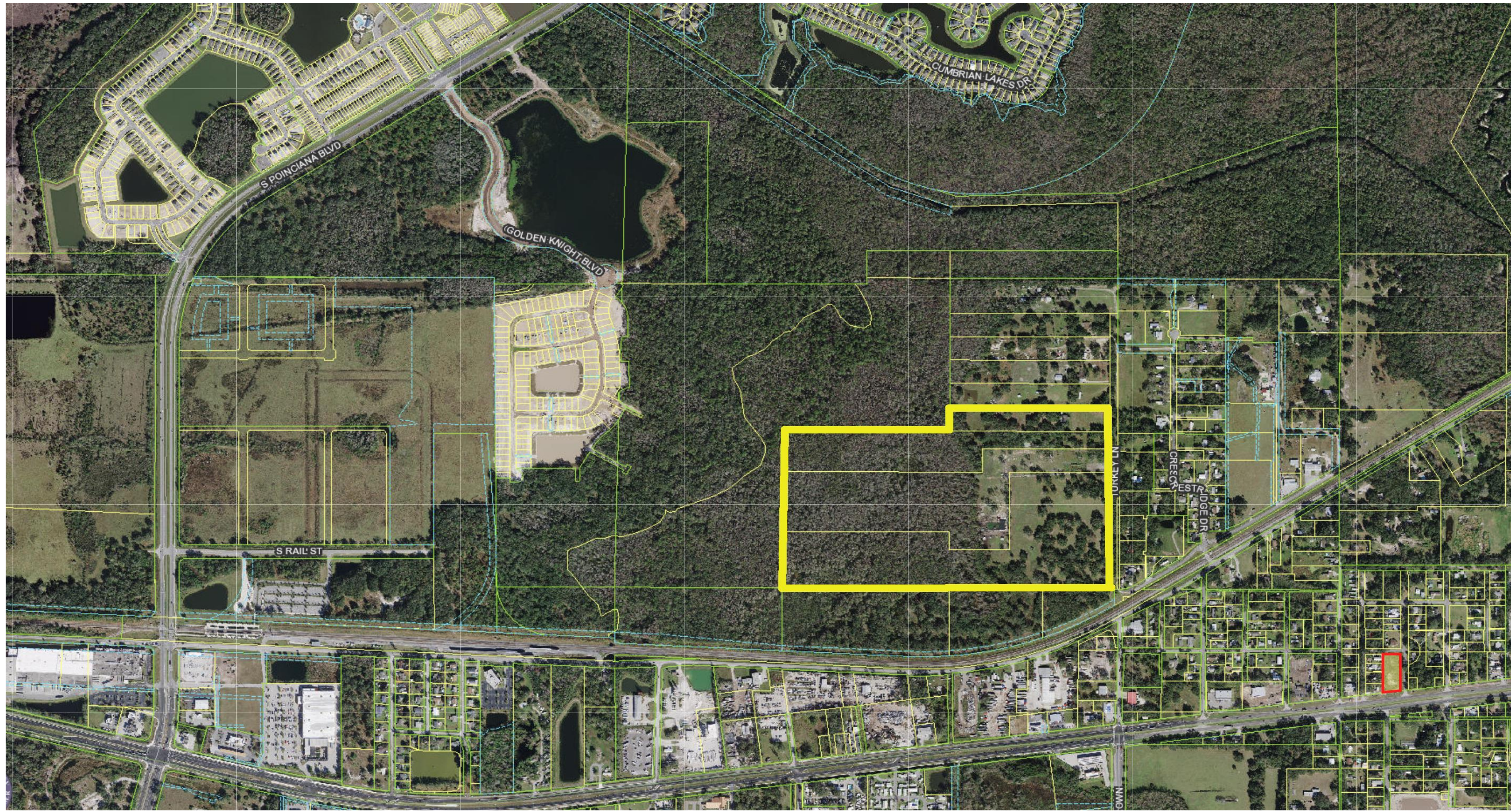
E- Barn
100' x 150'
E1 - Open Barn Stalls
75' x 90' each



F- Food Court - 3 main vendors
200' x 250'



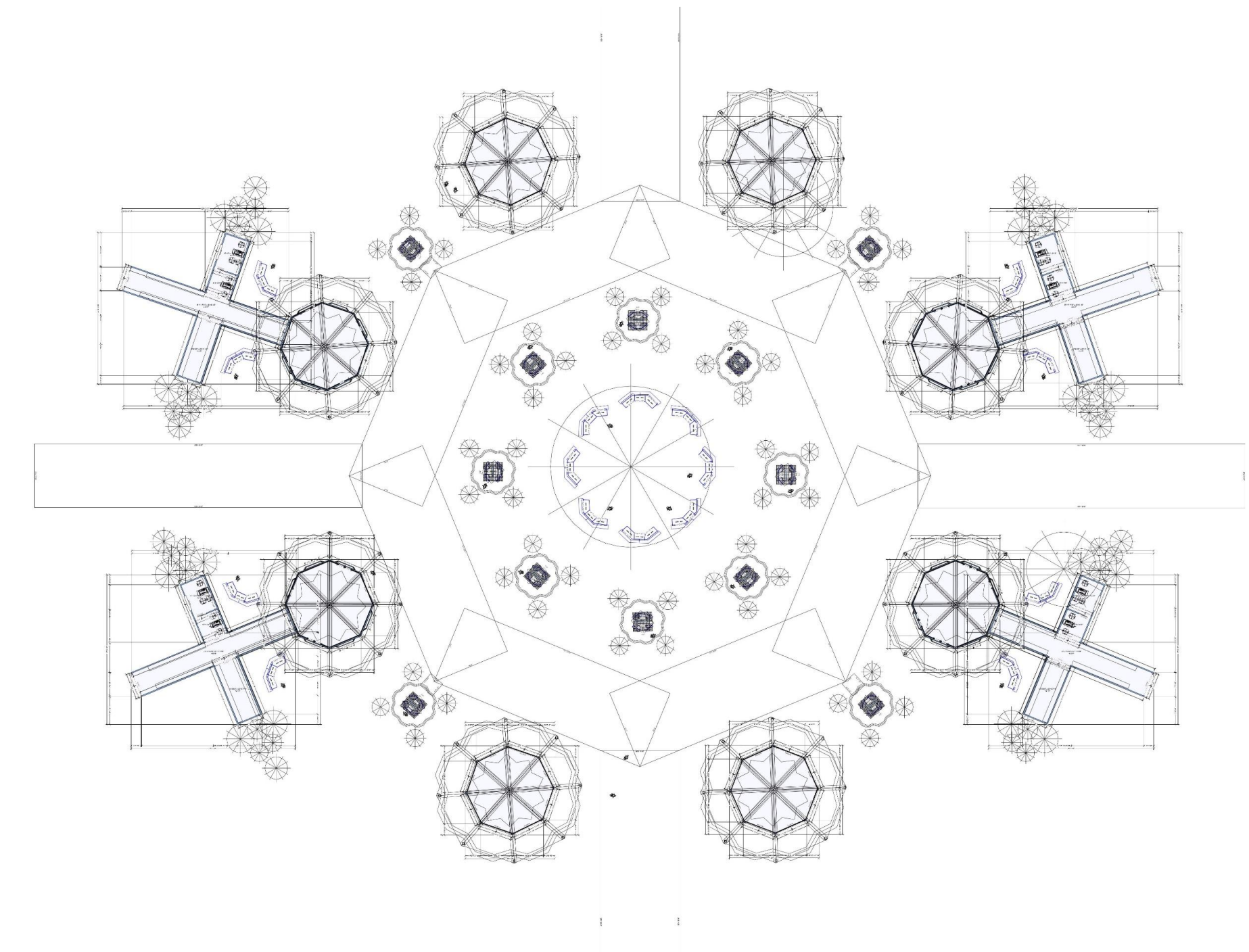
G- Eco-swamp
G1 - Horse roller coaster
G2 - Eco-tech area
G3 - Enchanted music area



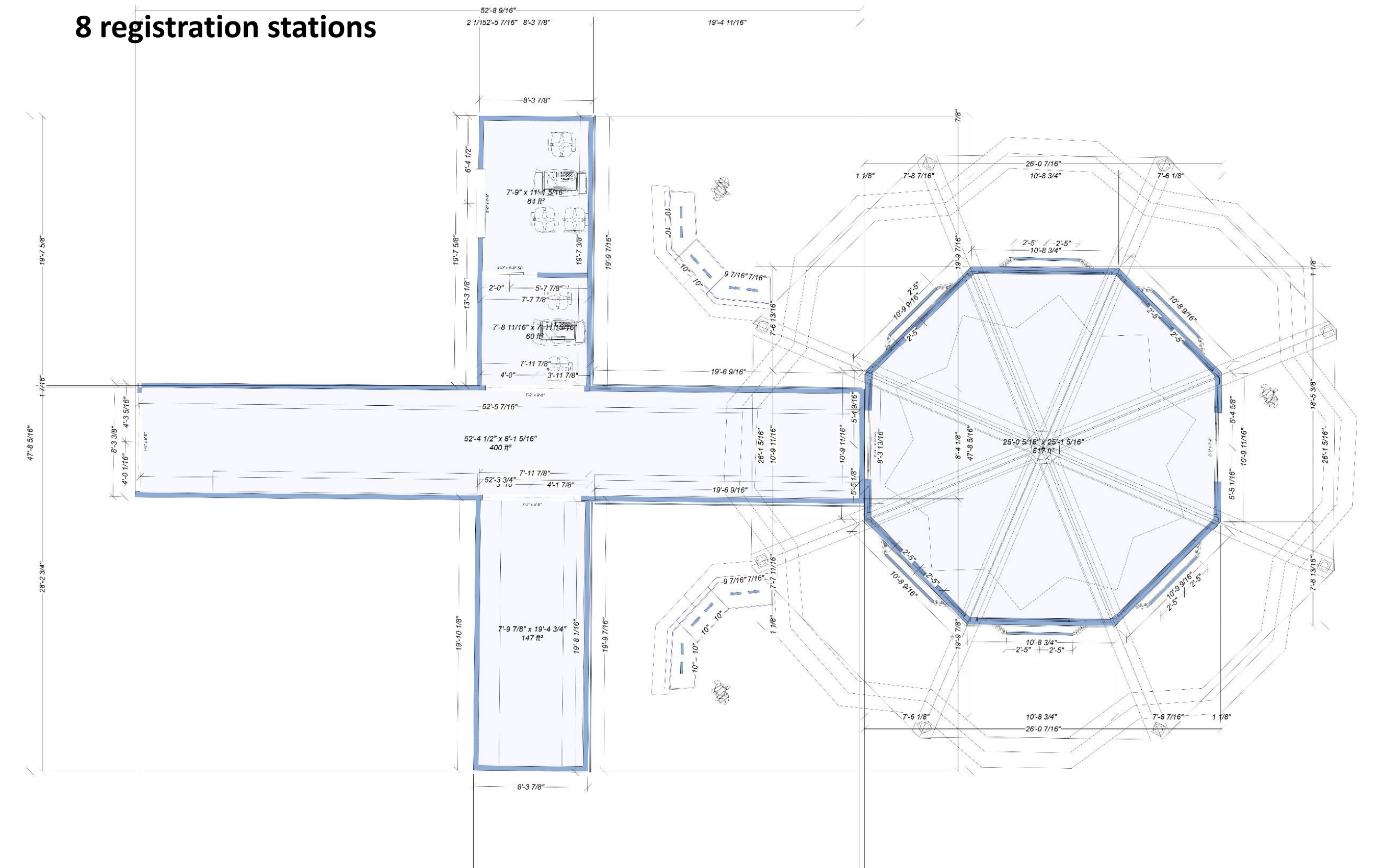


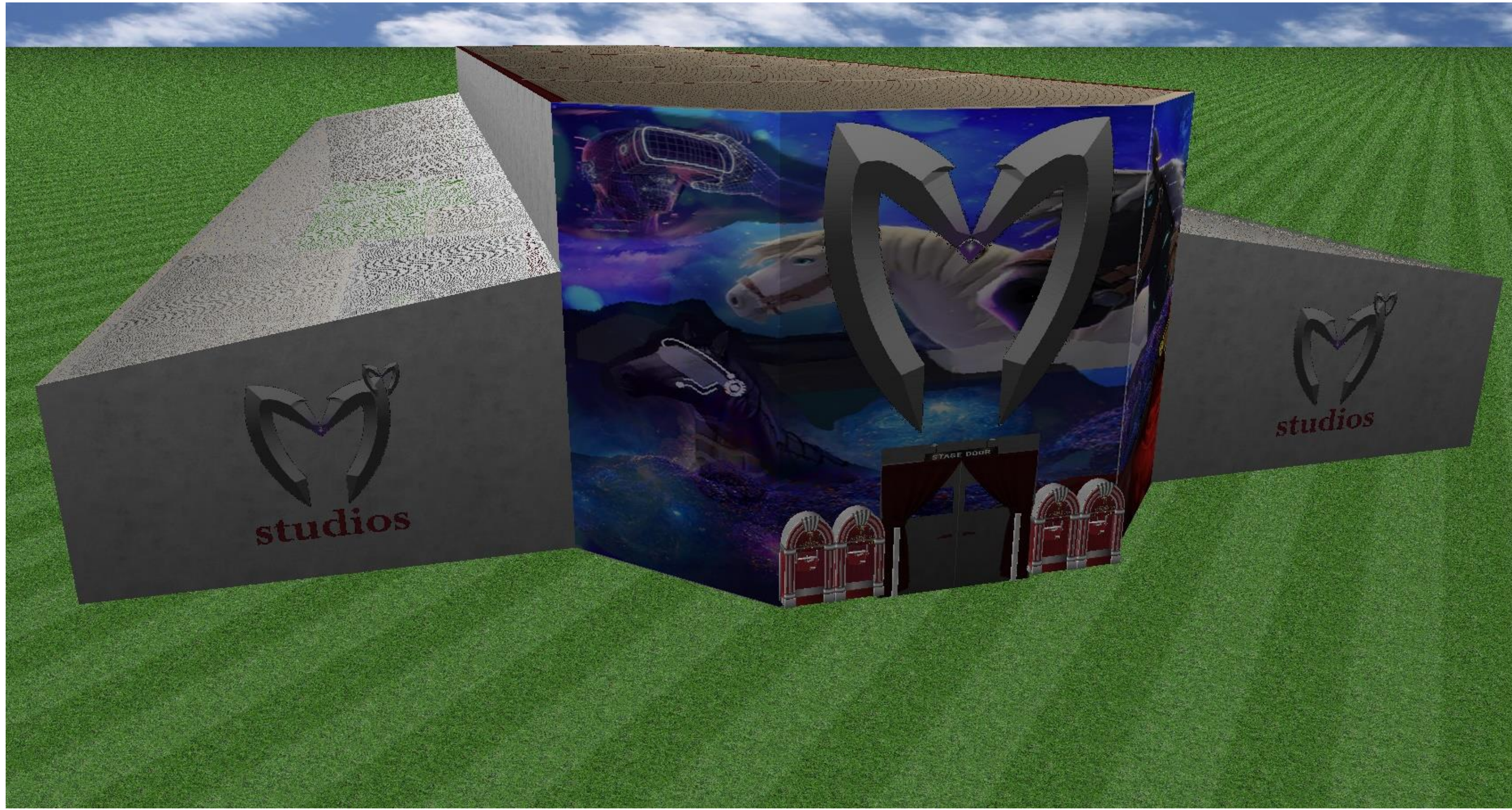
A- Entrance
Retail stores & educational area

- 4' octagon huts (retail stores)
- 8'x53' storage containers (2 per store)
- 16 educational kiosks
- 8 registration stations

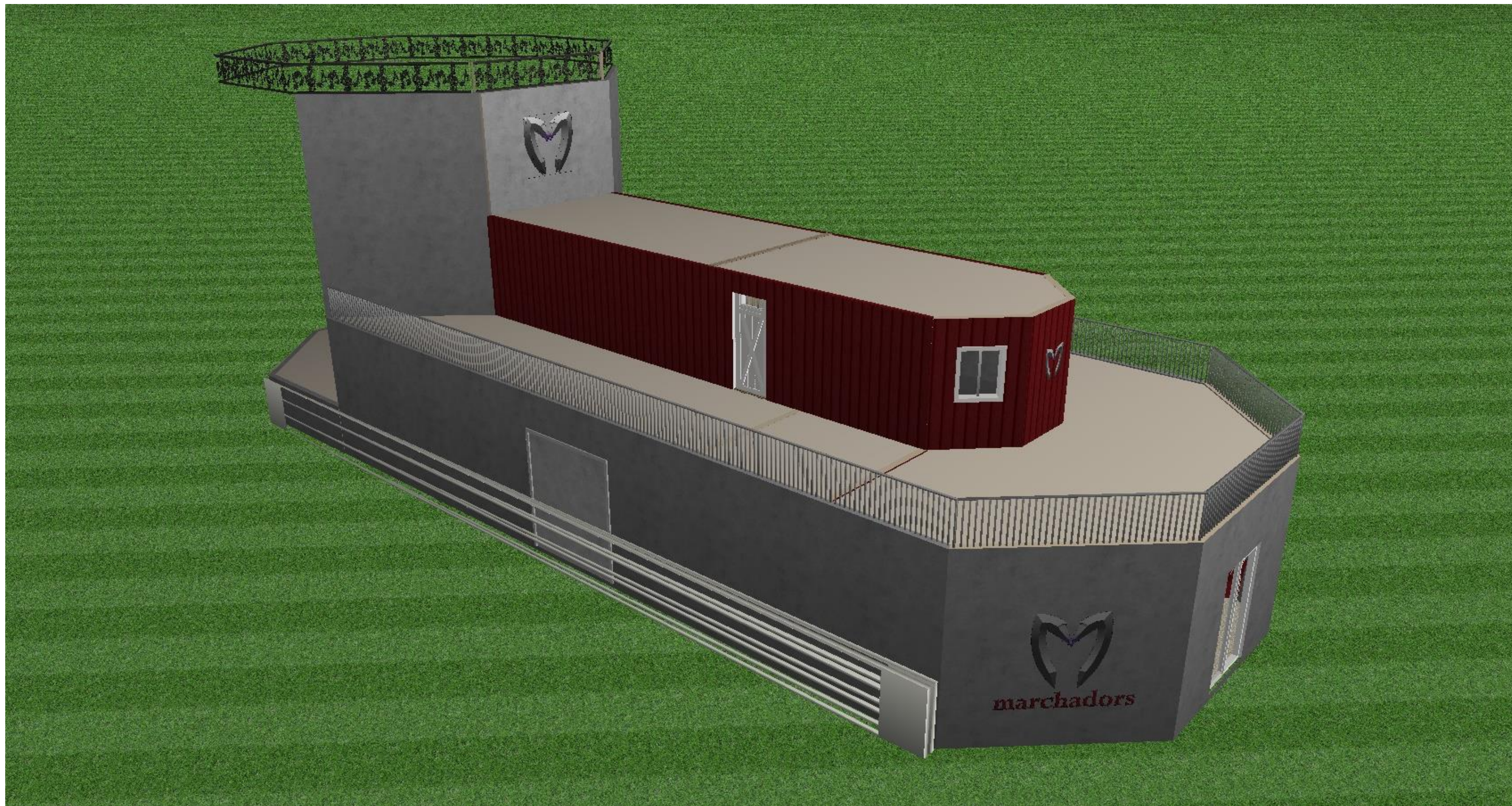
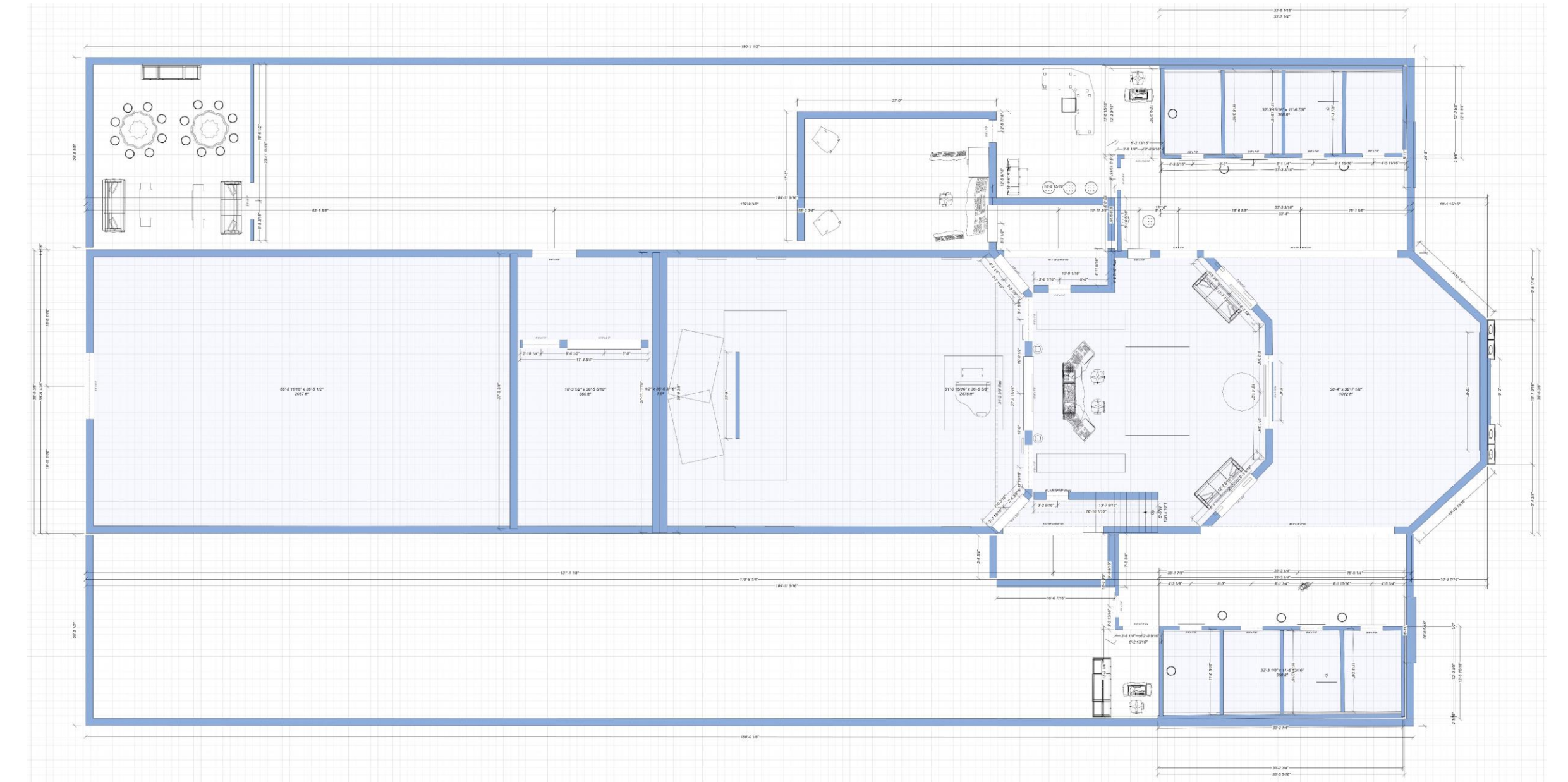


A1- Store
40'x40' octagon hut (4 huts)
8'x53' storage containers (2 per store)
16 educational kiosks
8 registration stations

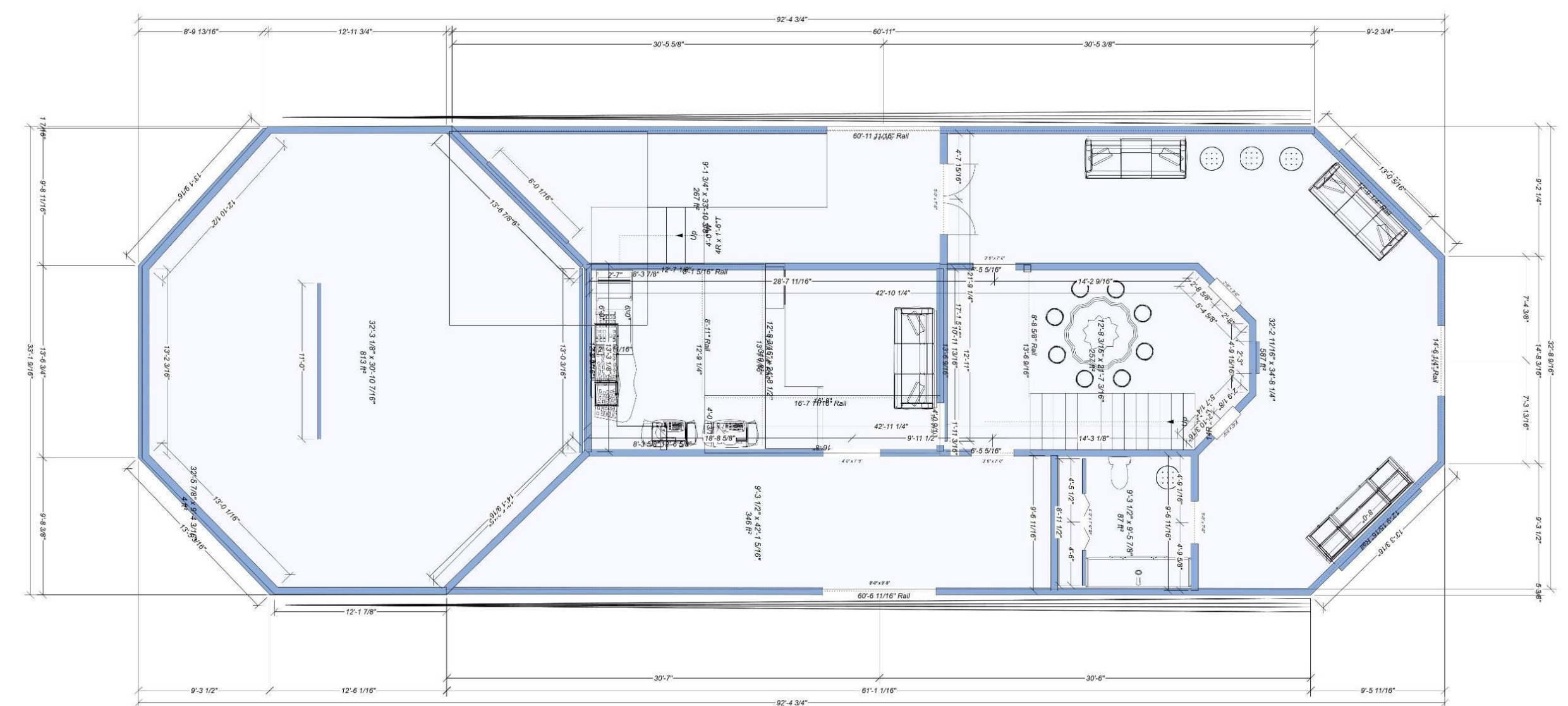


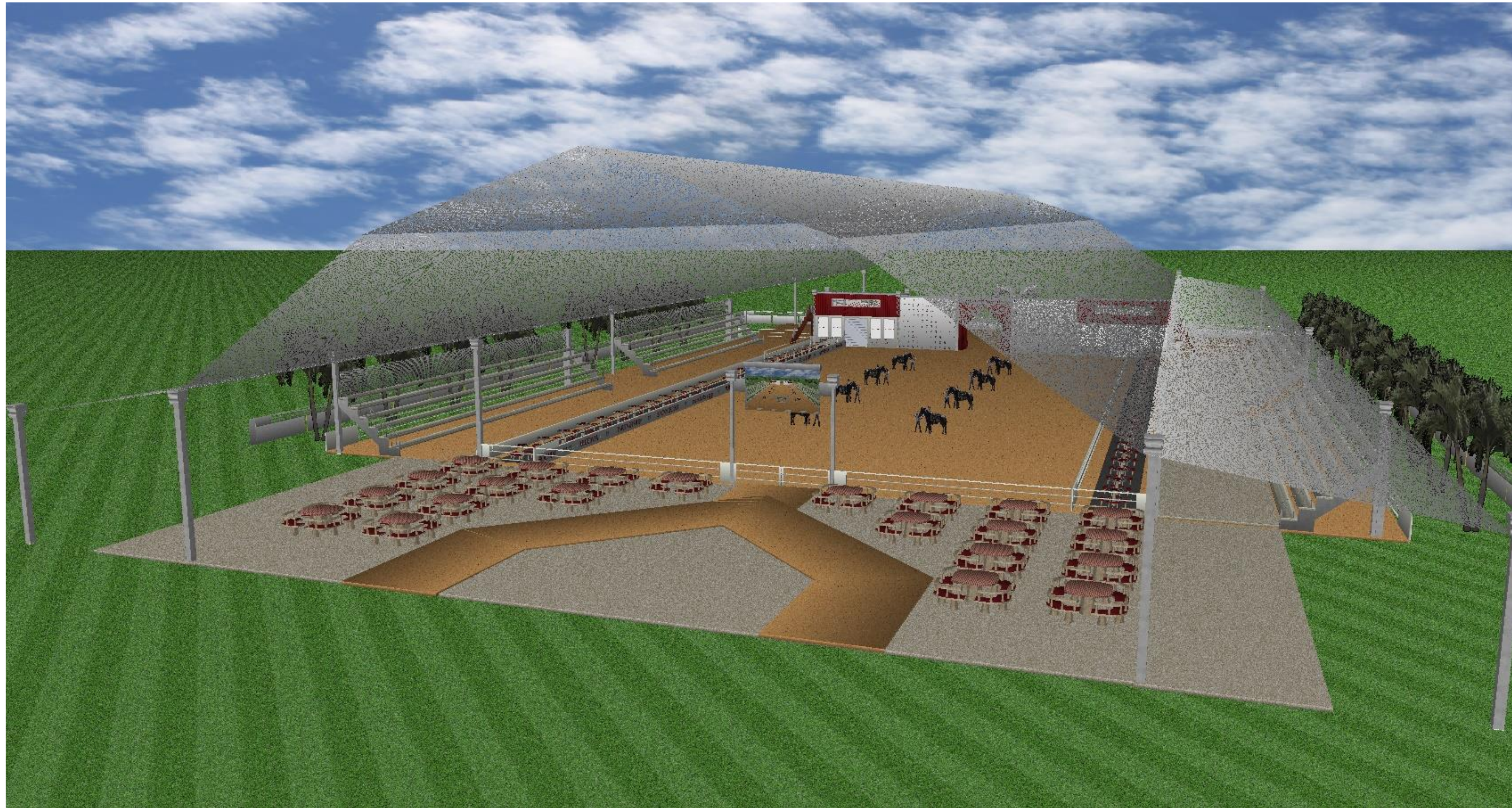


B- Studios Building
90' x 180'



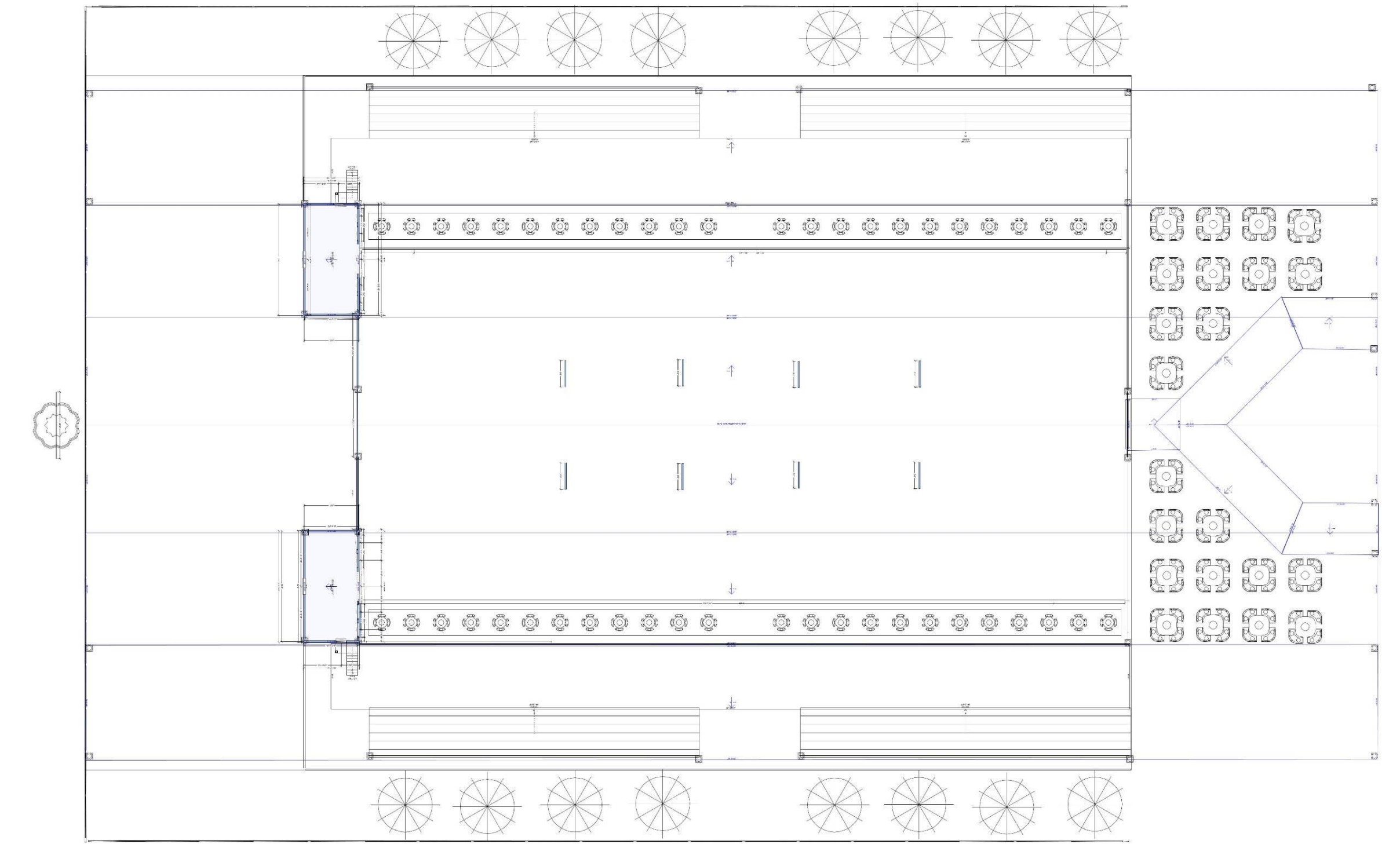
C- Stage + control room/studio
90' x 180'





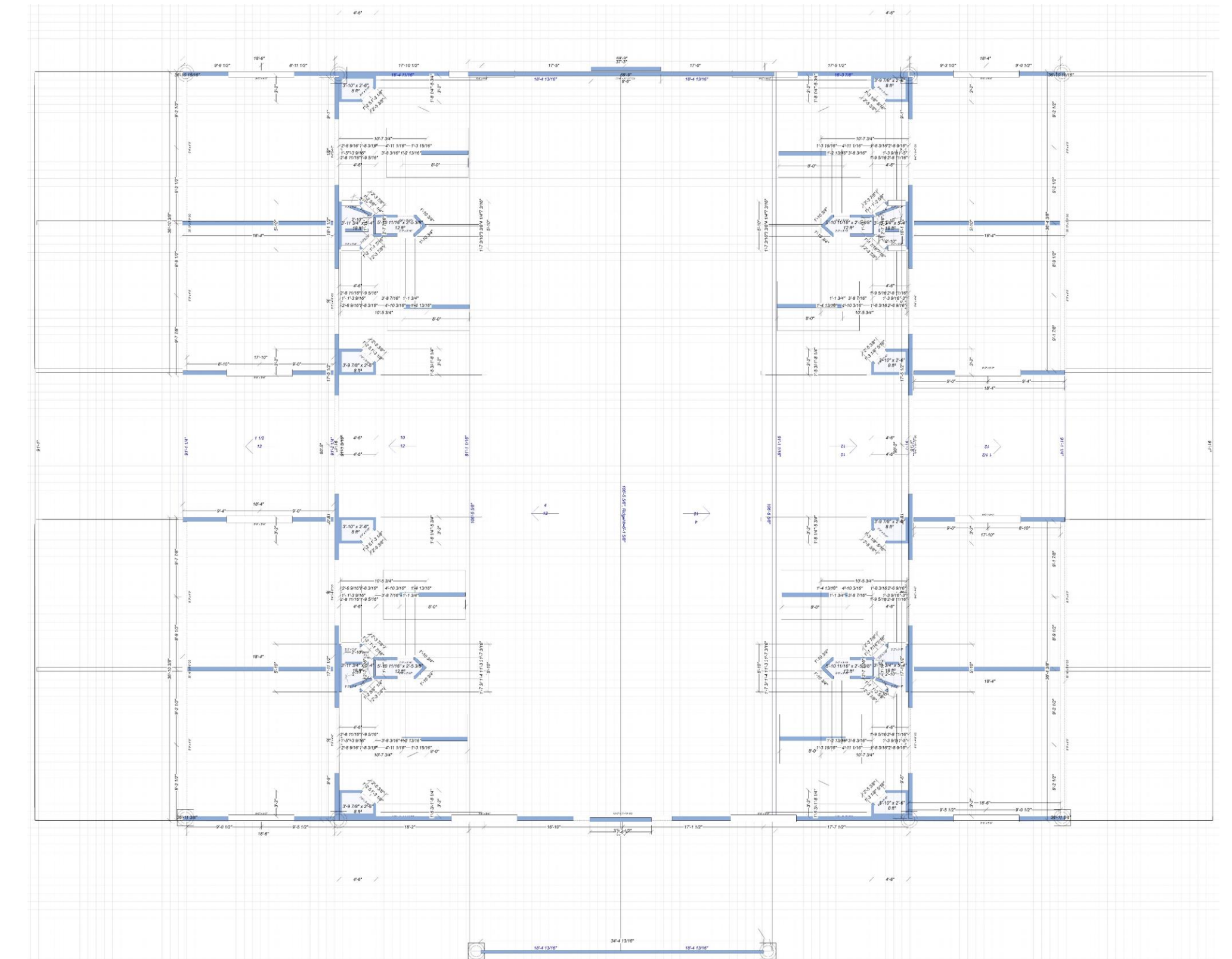
D- Arena
220' x 400'

Bleachers 1,500 seatings
Side tables 500 seatings
Auditorium tables 250 seatings
Other 250 seatings



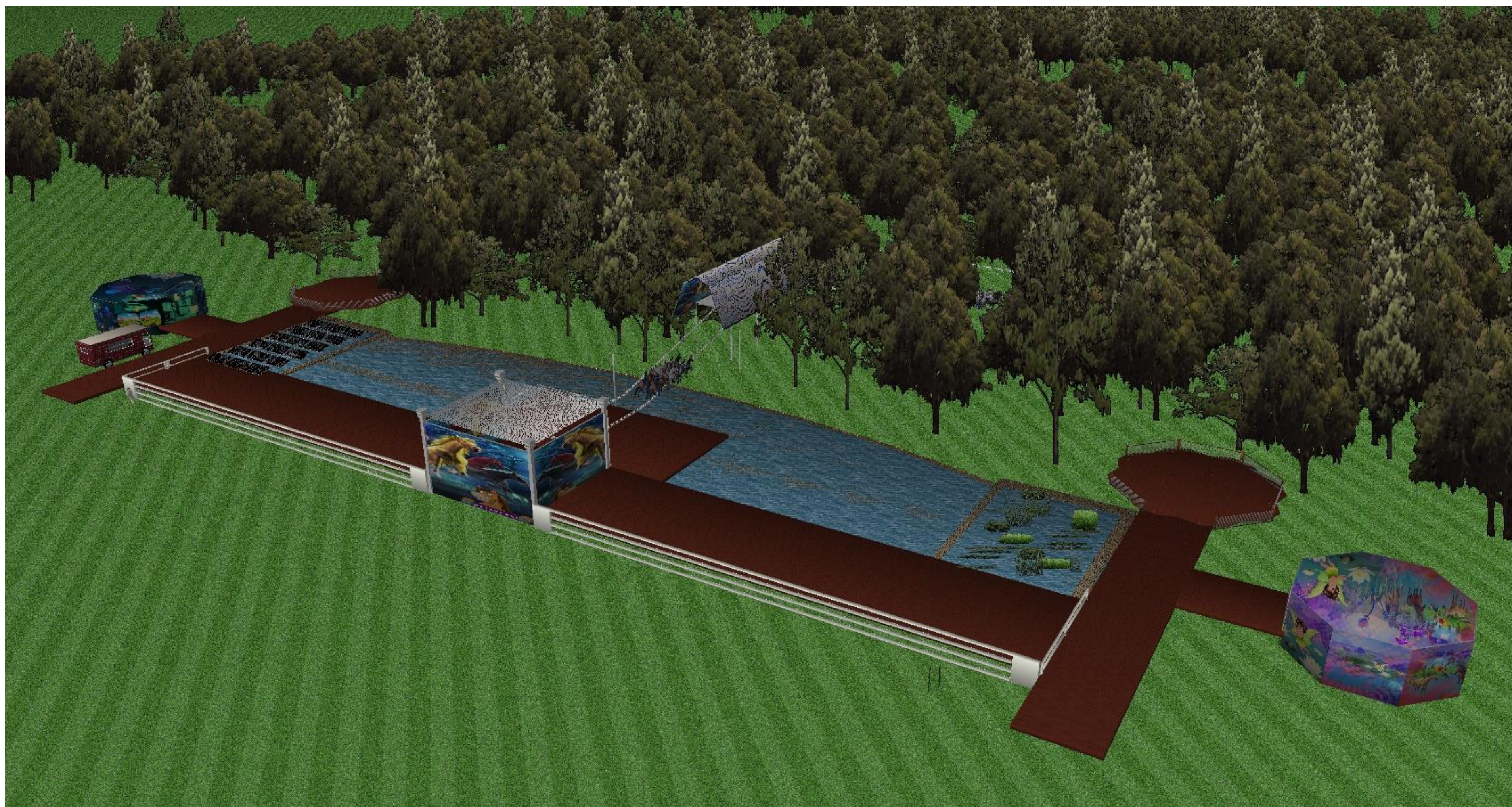
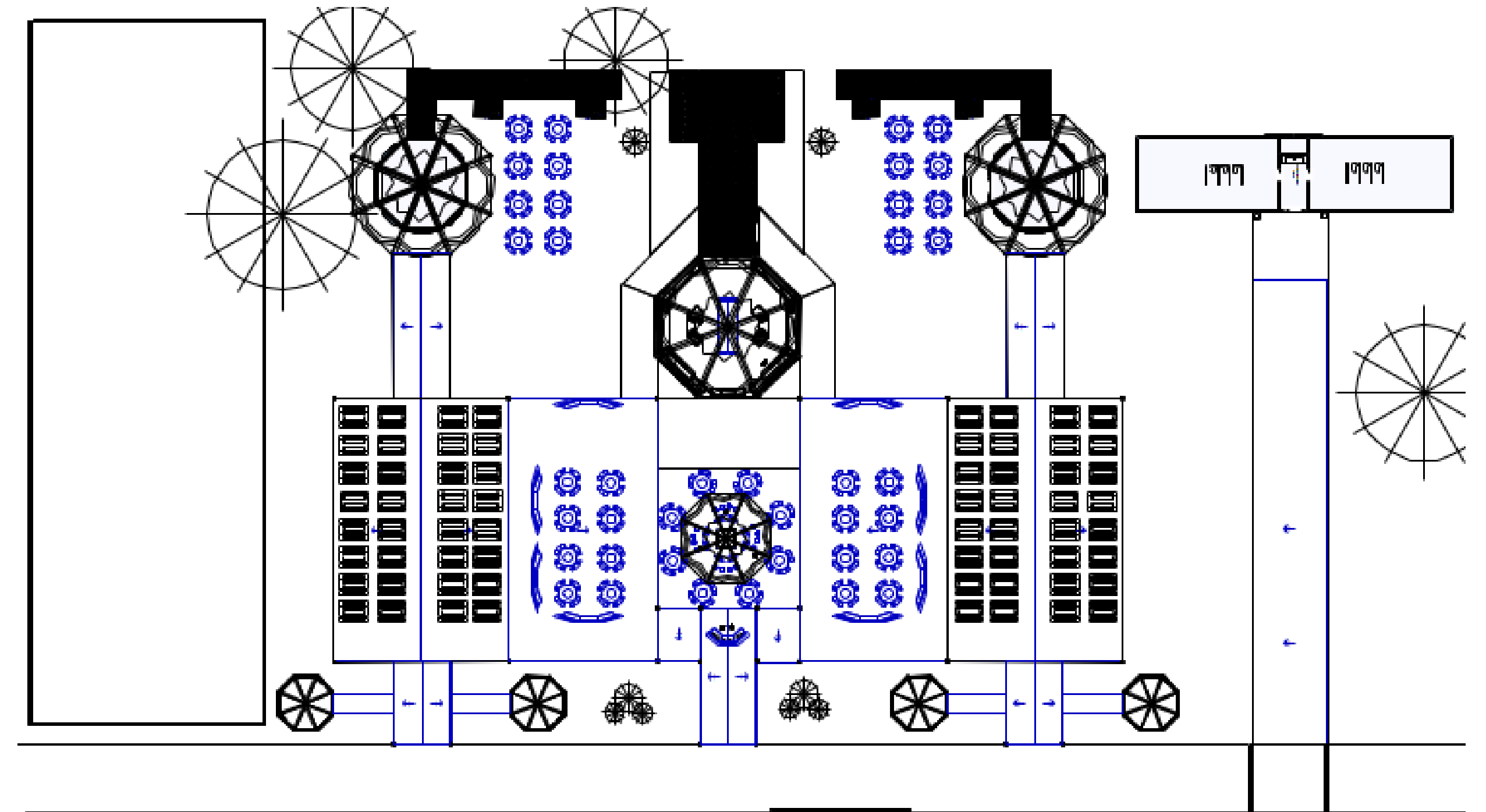
E- Barn
100' x 150'

E1 – Open Barn Stalls
75' x 90' each



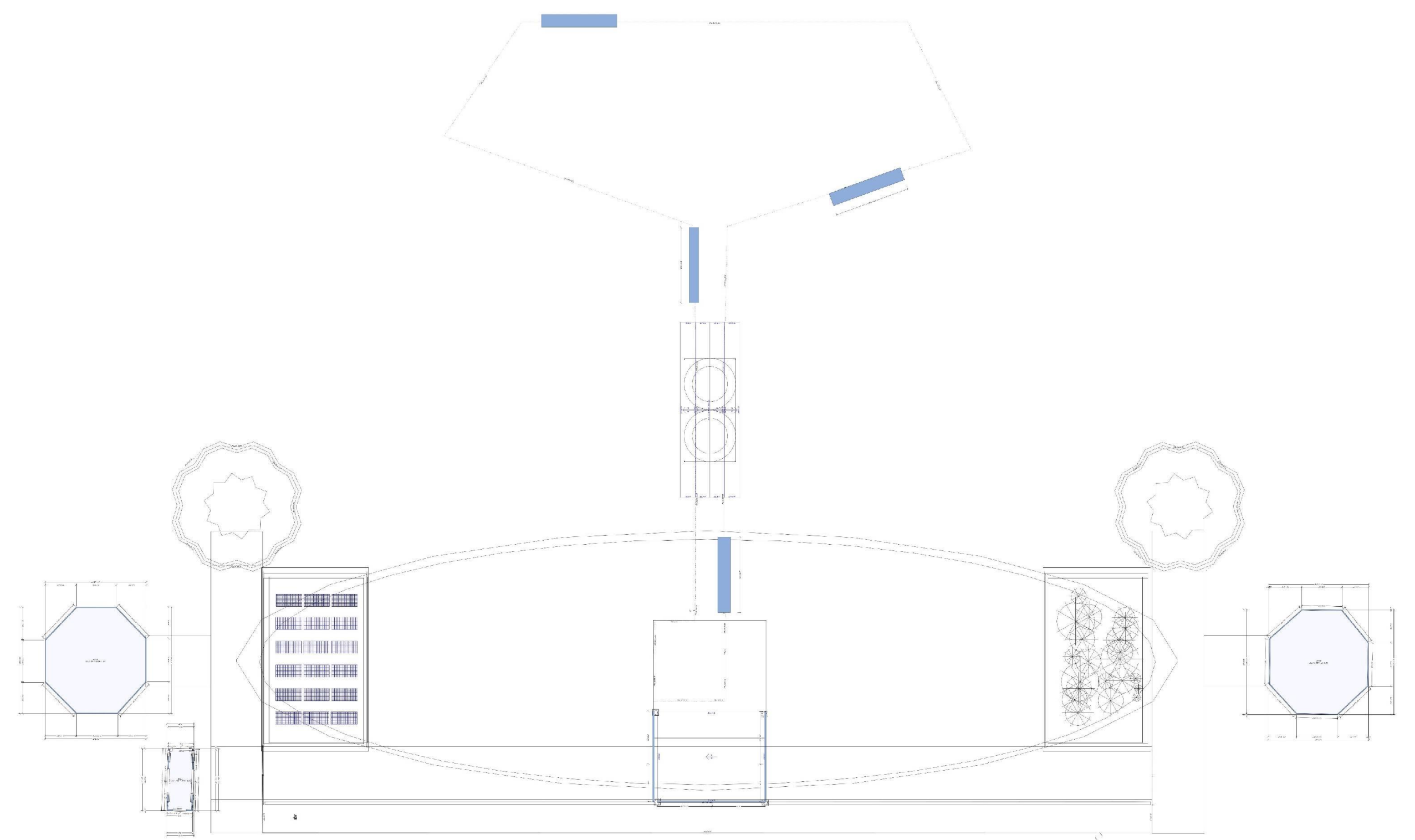


F- Food Court
200' x 250'



G- Eco-swamp

- G1 – Horse roller coaster
- G2 – Eco-tech area
- G3 – Enchanted music area



Foundation - Adjacent Property

